

6FM150P-X 12V 150Ah(10hr)

The rechargeable batteries are lead-lead dioxide systems. The dilute sulfuric acid electrolyte is absorbed by separators and plates and thus immobilized. Should the battery be accidentally overcharged producing hydrogen and oxygen, special one-way valves allow the gases to escape thus avoiding excessive pressure build-up. Otherwise, the battery is completely sealed and is, therefore, maintenance-free, leak proof and usable in any position.

Battery Construction

| Component | Positive plate | Negative plate | Container | Cover | Safety valve | Terminal | Separator | Electrolyte |
|--------------|----------------|----------------|-----------|-------|--------------|----------|------------|---------------|
| Raw material | Lead dioxide | Lead | ABS | ABS | Rubber | Copper | Fiberglass | Sulfuric acid |

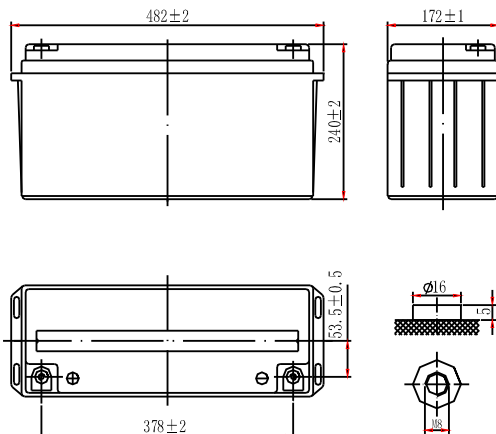
General Features

- Advanced pure lead technology.
- Longer float & cycle life, longer warranty.
- Stronger discharge performance.
- Special design to avoid thermal runaway.
- 4-fold terminal sealing to avoid leaking.
- Excellent consistency and reliability.
- Can be mounted in any orientation.
- Maintenance-free operation.
- Low self discharge.
- Case and cover available in both standard and flame retardant ABS.

Dimensions and Weight

| | |
|--------------------------|-------------|
| Length(mm / inch) | 482 / 19.0 |
| Width(mm / inch) | 172 / 6.77 |
| Height(mm / inch) | 240 / 9.45 |
| Total Height(mm / inch) | 240 / 9.45 |
| Approx. Weight(Kg / lbs) | 43.0 / 94.8 |

* Weight deviation: $\pm 3\%$



Performance Characteristics

| | |
|--|------------------------|
| Nominal Voltage | 12V |
| Number of cell | 6 |
| Design Life | 10 years |
| Nominal Capacity 77°F(25°C) | |
| 10 hour rate (15.0A, 10.8V) | 150Ah |
| 5 hour rate (27.0A, 10.5V) | 135Ah |
| 1 hour rate (102A, 9.6V) | 102Ah |
| Internal Resistance | |
| Fully Charged battery 77°F(25°C) | $\leq 4.5\text{mOhms}$ |
| Self-Discharge | |
| 3% of capacity declined per month at 20°C(average) | |
| Operating Temperature Range | |
| Discharge | -20~60°C |
| Charge | -10~60°C |
| Storage | -20~60°C |
| Max. Discharge Current 77°F(25°C) | 1000A(5s) |
| Short Circuit Current | 2700A |
| Charge Methods: Constant Voltage Charge 77°F(25°C) | |
| Cycle use | 2.40-2.45VPC |
| Maximum charging current | 45A |
| Temperature compensation | -30mV/°C |
| Standby use | 2.20-2.30VPC |
| Temperature compensation | -20mV/°C |

Discharge Constant Current (Amperes at 77°F25°C)

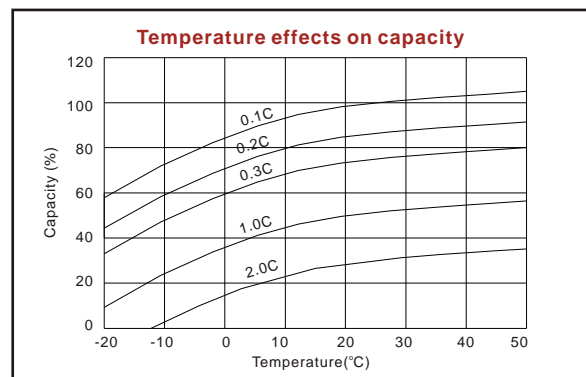
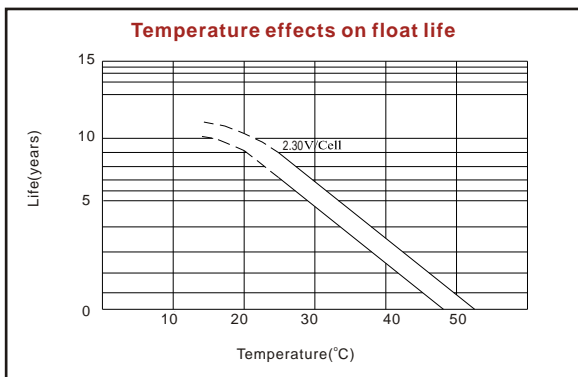
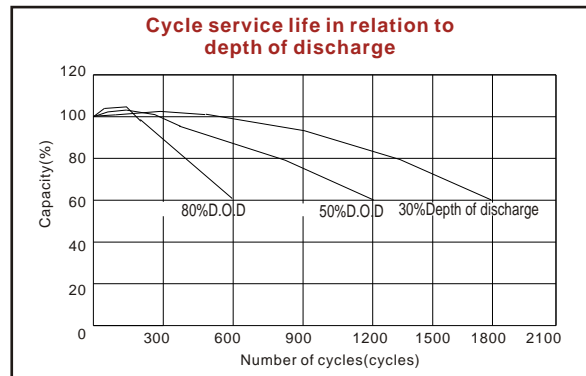
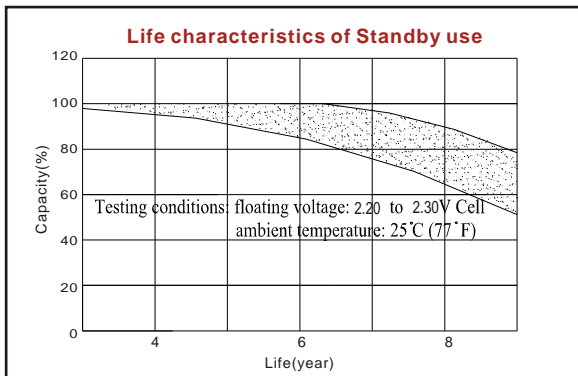
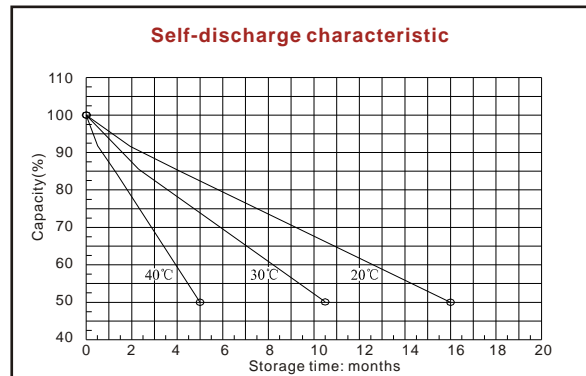
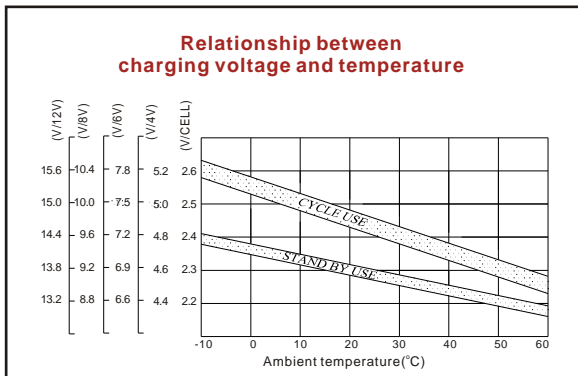
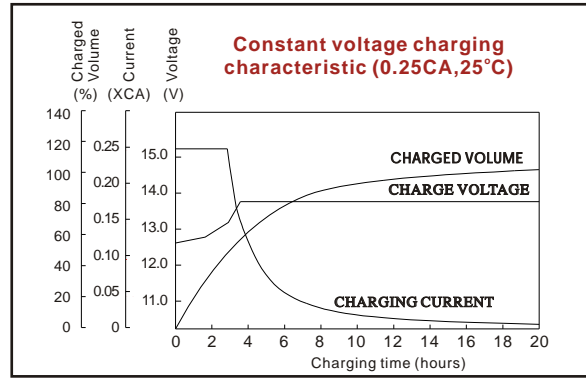
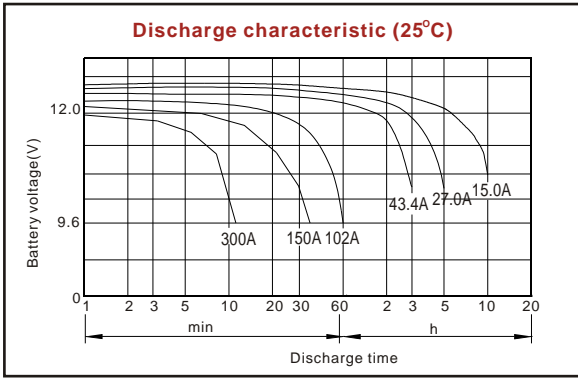
| End Point Volts/Cell | 10min | 15min | 30min | 45min | 1h | 3h | 5h | 10h |
|----------------------|-------|-------|-------|-------|------|------|------|------|
| 1.60V | 360 | 288 | 169 | 123 | 102 | 44.5 | 28.8 | 15.5 |
| 1.65V | 327 | 267 | 162 | 120 | 99.0 | 44.2 | 28.2 | 15.4 |
| 1.70V | 313 | 259 | 160 | 118 | 96.3 | 43.8 | 27.6 | 15.2 |
| 1.75V | 288 | 240 | 156 | 114 | 93.4 | 43.4 | 27.0 | 15.1 |
| 1.80V | 264 | 222 | 150 | 110 | 90.5 | 41.4 | 26.5 | 15.0 |

Discharge Constant Power (Watts at 77°F25°C)

| End Point Volts/Cell | 10min | 15min | 30min | 45min | 1h | 3h | 5h | 10h |
|----------------------|-------|-------|-------|-------|-----|------|------|------|
| 1.60V | 637 | 542 | 333 | 243 | 192 | 84.5 | 55.4 | 30.5 |
| 1.65V | 614 | 504 | 304 | 235 | 186 | 83.9 | 54.1 | 29.4 |
| 1.70V | 566 | 469 | 300 | 229 | 181 | 83.3 | 53.2 | 28.9 |
| 1.75V | 532 | 444 | 294 | 224 | 177 | 82.1 | 52.1 | 28.5 |
| 1.80V | 498 | 425 | 289 | 221 | 175 | 80.8 | 51.0 | 27.9 |

(Note) The above characteristics data are average values obtained within three charge/discharge cycles not the minimum values. All data shall be changed without notice, Vision reserves the right to explain and update the information contained hereinto.

www.vision-batt.com



ISO9001:2008

MH25860

G4M19906-9202-E-16

www.vision-batt.com

Shenzhen Center Power Tech. Co., Ltd.
 Center Power Industrial Park, Tongfu Industrial District Dapeng Town, 518120 Shenzhen, China
 Tel: (+86-755) 8431 8088 Fax: (+86-755) 8431 8038 E-mail: sales@vision-batt.com